

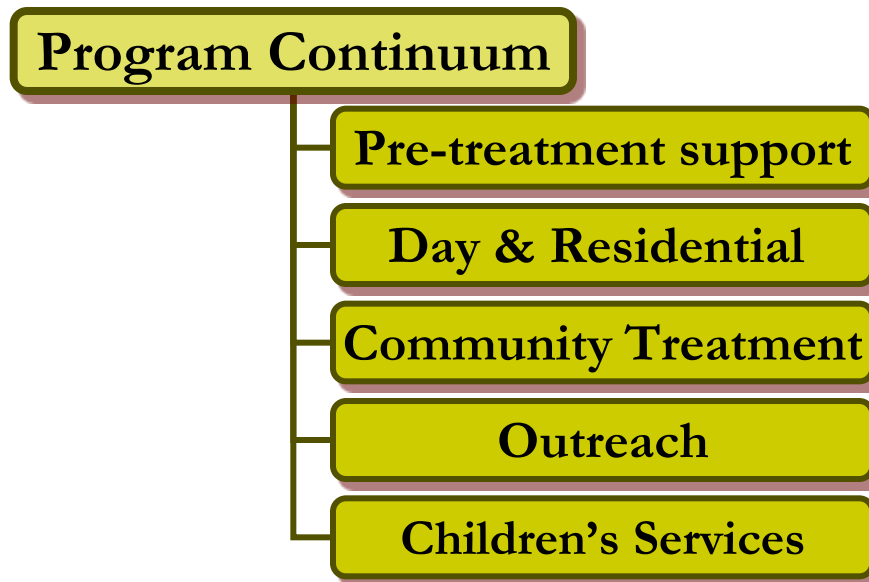
Building Organizational Capacity for Mothering: The Domino Effect



The Jean Tweed Centre
November 17, 2009

The Jean Tweed Centre

- Substance abuse and problem gambling services for women & their families





Mothers & Children at JTC

- Early recognition that services for substance abusing women and children are most effective when integrated:
 - Founding partner of Breaking the Cycle
 - The Ontario Early Years Addiction Initiative, 2002
 - Pathways To Healthy Families



The Population

- Pregnant/Parenting Women Who Use Substances:
 - Marginalized
 - Culturally Diverse
 - Concurrent Disorders
 - Stigma
 - Not Identified & Not Asked
 - Low/No Income

Pathways Concept

- ❑ An interconnecting service network across the City of Toronto
- ❑ Building Capacity
- ❑ Outreach Services, reaching pregnant women and mothers with children (0-6 years)
- ❑ Child Development Services





Pathways Partners

- ❑ Outreach counsellors located in:
 - ❑ Community Health Centres
 - ❑ Young Parents Resource Centres
 - ❑ Shelter System
 - ❑ Aboriginal communities



Approach

- ❑ Harm Reduction
 - ❑ Respecting Complex Choices
 - ❑ Information & Support

- ❑ Assertive Outreach
 - ❑ Identifying & Linking Women to Care

- ❑ Advocacy/Mediation
 - ❑ Child Welfare
 - ❑ Health Care/Housing/Justice/Other



Three years later, we learned...

- ❑ Need was there
- ❑ Outreach works
- ❑ Low retention in structured day treatment

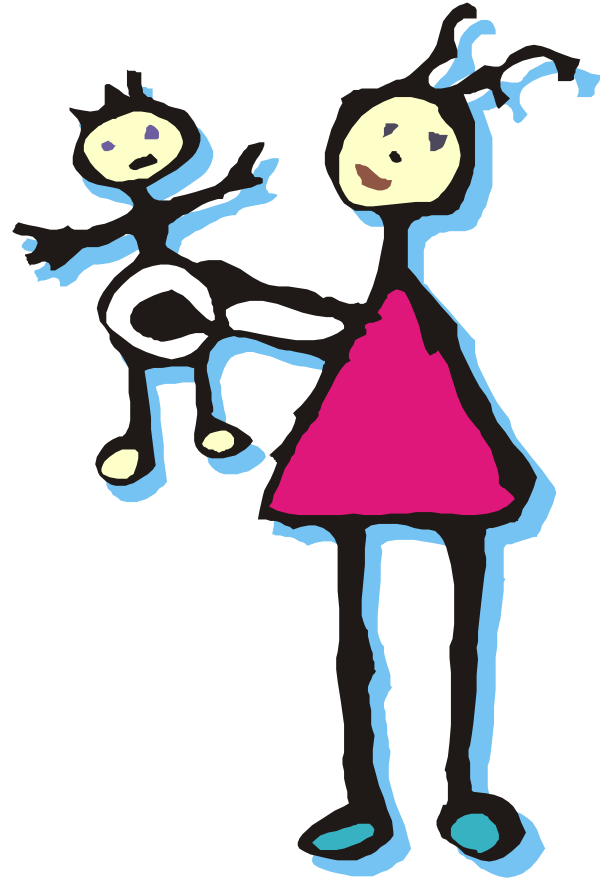
Why?

- ❑ Pre/post natal
- ❑ Context & Connection
- ❑ Medical
- ❑ Child welfare
- ❑ Flexibility

Something Wasn't Working

Women told us...

- *...half the time I had appts, was late or couldn't stay awake*
- *... getting there everyday is impossible*
- *...if I don't do treatment I will lose my kid*

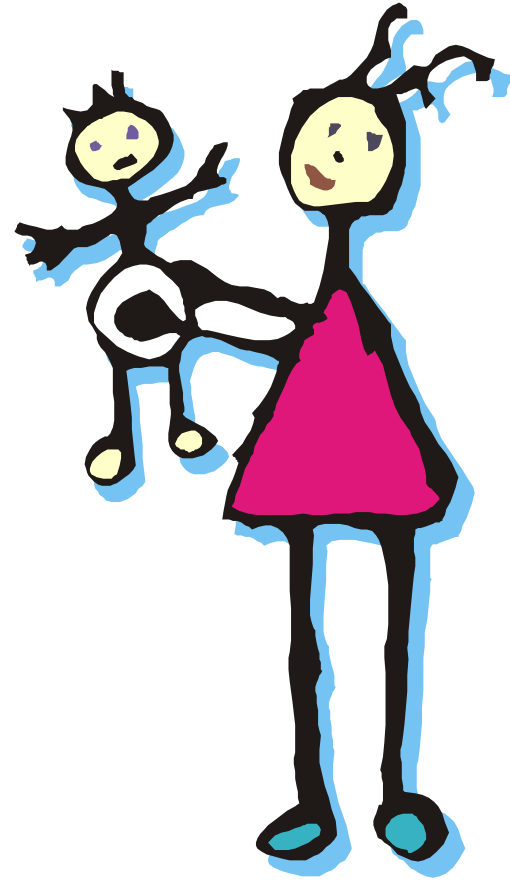


So... one thing led to another

If these moms didn't fit
the program, maybe the
program could fit the
moms.



Mom and Kids Too





Program Development

- Literature review
- Focus groups with families
- Stakeholders consultation



Conclusions

- ❑ Child Welfare plays central role
- ❑ Impact of substance use on parenting
- ❑ Links between PTSD and Attachment
- ❑ Few opportunities to integrate parenting/child development into traditional treatment



MK2 Objectives

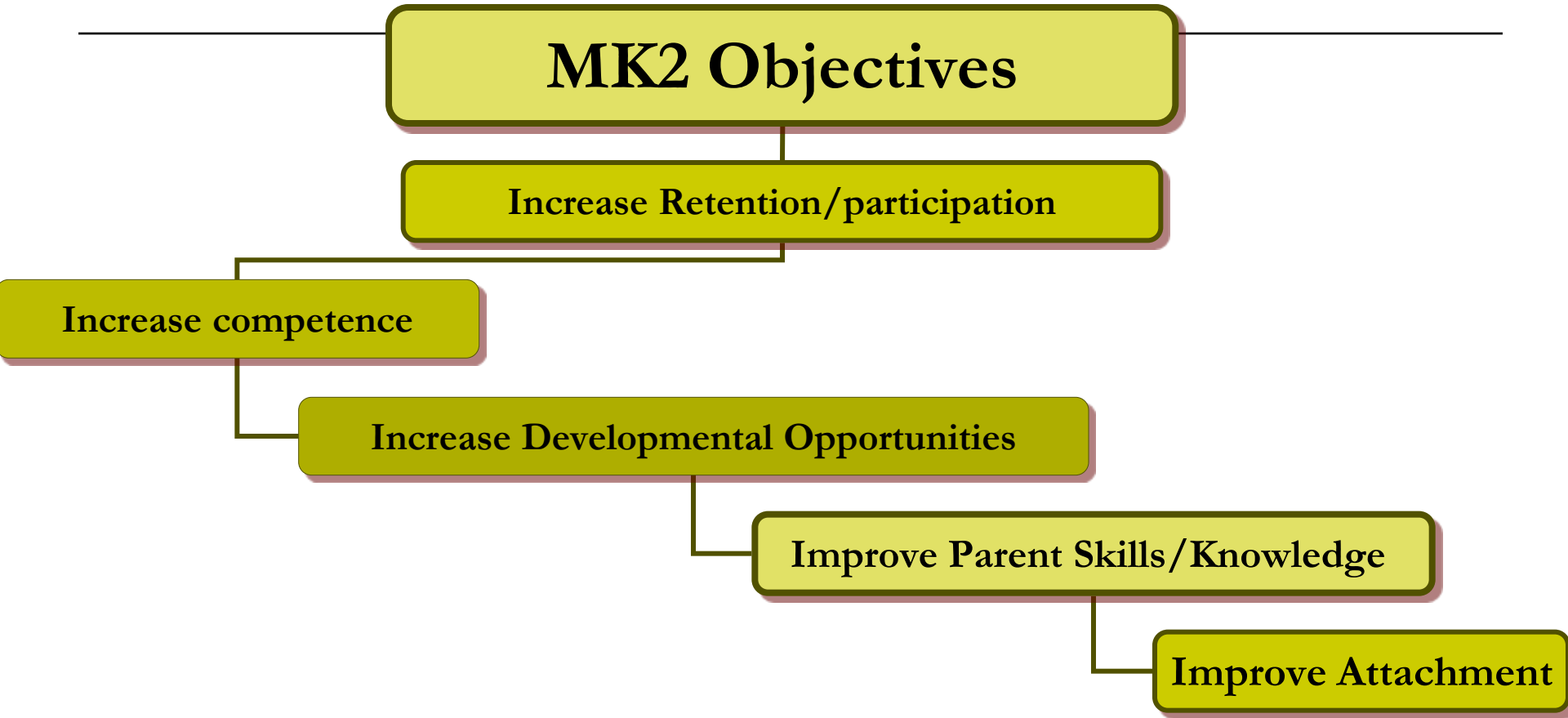
Increase Retention/participation

Increase competence

Increase Developmental Opportunities

Improve Parent Skills/Knowledge

Improve Attachment





MK2 Principles

Best Practice

Flexible

Harm Reduction

Collaboration



MK2 Design

3 days (7wks)

Breakfast

Play Group

Parenting

Heath

Relapse Prevention

Group Therapy



The Moms – Who are they?

- ❑ Committed to parenting
- ❑ Motivated by their children
- ❑ Child Welfare involvement
- ❑ Histories of neglect/abuse/grief/isolation/trauma

Results (small sample size)

All measures showed positive movement

- Increase in resistance to use
- Increase in receptivity, buy-in and trust with child welfare
- Decrease in depression
- Increase in parental knowledge
- Increase perceived social support
- Decrease in mental health difficulties in five areas



Participant Response

- Client Satisfaction Survey: 21 Items
 - Satisfied and very satisfied

- Treatment Components: 36 Items
 - Positive rating



Completion Rate

81%



Thank- you for your attention

Questions?

Tammy MacKenzie

Program Manager

416-255-7359 ext 278

Tammym@jeantweed.com